

## 078403 | Legrand notice



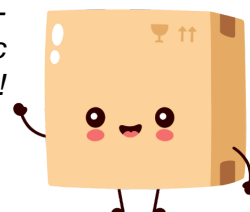
**Variateur de couleur Mosaic - 1 zone  
- Ballasts et drivers DALI - 2 postes -  
Blanc**

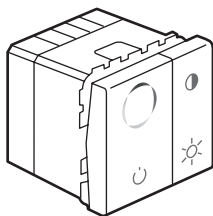
Réf 078403

**267.94€<sup>TTC\*</sup>**






Voir le produit : <https://www.domomat.com/40705-variateur-de-couleur-mosaic-1-zone-ballasts-et-drivers-dali-2-postes-blanc-legrand-078403.html>

*Le produit Variateur de couleur Mosaic - 1 zone - Ballasts et drivers DALI - 2 postes -  
Blanc  
est en vente chez Domomat !*





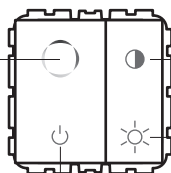
DALI

	110 V~ - 240 V~
 DALI	16V $\approx$ (22V $\approx$ max.)
	50 / 60 Hz
	2 x 2,5 mm <sup>2</sup>
	-5°C / +45°C

- Application
- Application

- Choix de la couleur
- Choice of colour

- Saturation (couleur  $\rightarrow$  blanc)
- Saturation (colour  $\rightarrow$  white)



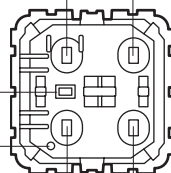
ON/OFF

- Intensité
- Brightness

- Apprentissage
- Learn phase

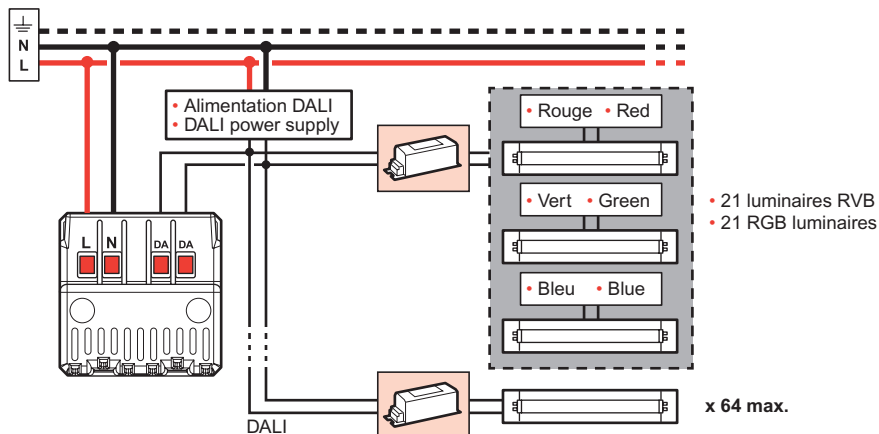
- Rouge
- Red
- Vert
- Green

- Bouton LEARN
- LEARN button
- LED LEARN



Next

- Bleu
- Blue





- Flash
- Flash



- Allumé continuellement
- On continuously



- Clignotant rapide
- Flashing quickly



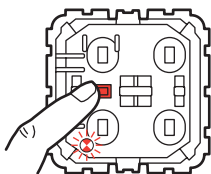
- Clignotant lent
- Flashing slowly

- Éteint
- Off

### • Configuration

### • Configuration

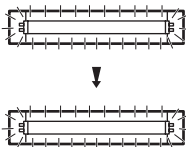
- ① • Distribution des adresses DALI (64 adresses max.)  
 • Distribution of DALI addresses (64 addresses max.)



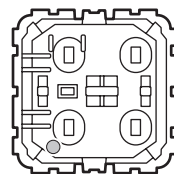
- 2 appuis courts < 1 s
- 2 short presses < 1 s



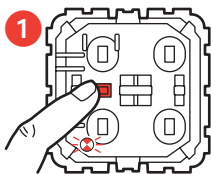
- Défilement des couleurs
- Scrolling through the colours



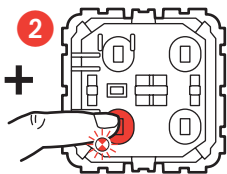
< 4 min



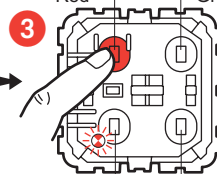
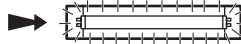
- ② • Création du lien entre adresses/couleurs pour chaque luminaire  
 • Creating the link between addresses/colours for each luminaire



< 1 s



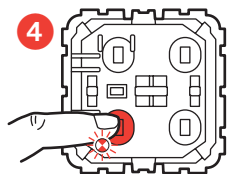
< 1 s



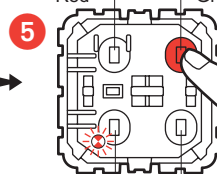
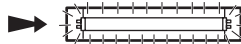
Next

• Bleu (Blue)

• Vert (Green)



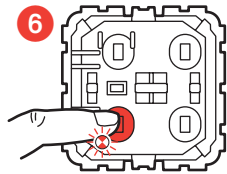
< 1 s



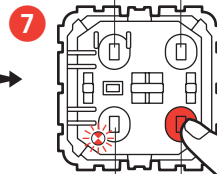
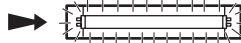
Next

• Bleu (Blue)

• Vert (Green)



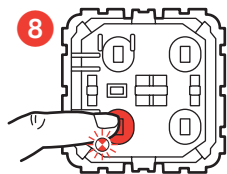
< 1 s



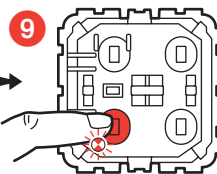
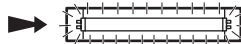
Next

• Bleu (Blue)

• Vert (Green)



< 1 s

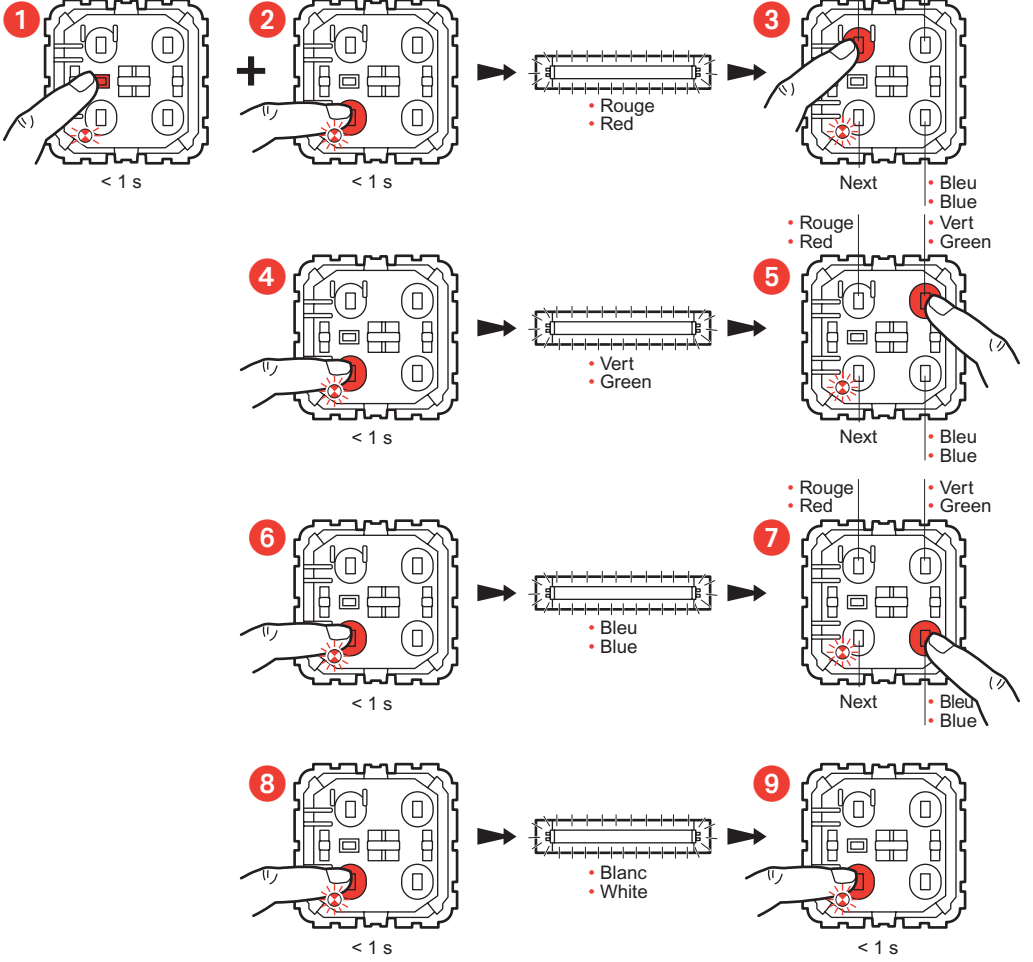


< 1 s

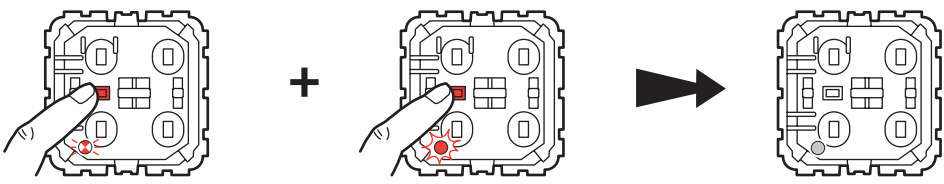
• Configuration (suite)

• Configuration (continued)

- ③ • Réouverture d'un apprentissage pour ajout d'1 luminaire et validation de toutes les couleurs  
 • Reopening a learn phase to add 1 luminaire and enable all the colours

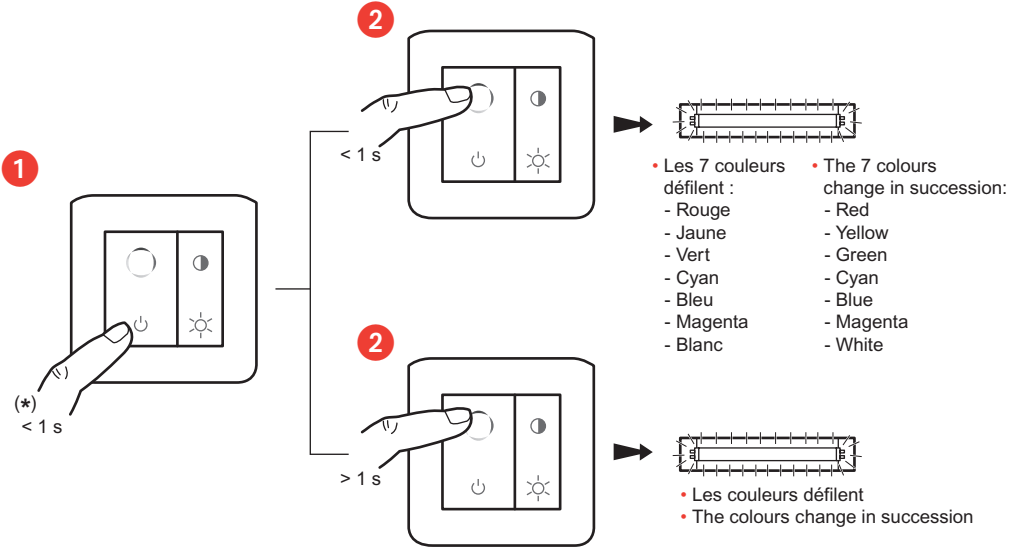


Reset



- > 10 s (rester appuyer jusqu'à clignotement rapide)
- > 10 s (hold down until the LED flashes quickly)

• **Fonctionnement**  
 • **Operation**



(\*) • Un appui court sur l'une des 4 touches permet l'allumage de l'éclairage  
 • A short press on one of the 4 buttons switches on the light

