

## APPA A11R | RS PRO

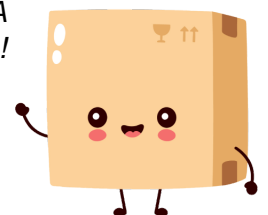


**Pince multimètre ICM135R - 600A**  
Réf APPA A11R

**180.49€<sup>TTC\*</sup>**

Voir le produit : <https://www.domomat.com/55047-pince-multimetre-icm135r-600a-rs-pro-appa-a11r.html>

*Le produit Pince multimètre ICM135R - 600A  
est en vente chez Domomat !*





ENGLISH

Datasheet  
Stock No. 123-3229  
**RS PRO ICM 135R Clamp Meter**



**Feature:**

- 4000 count digital display
- Backlit, large scale display
- Analog bargraph 43 segments
- True RMS reading on AC mode
- AC 600 Amps capability
- AC 600 Volts capability
- DC 600 Volts capability
- 400 Ohms Resistance capability
- Continuity beeper
- Display hold
- Peak hold (10ms)
- Min/Max function
- Frequency counter
- Auto power off
- Up to 34mm Dia. (750 MCM) conductor
- 4 feet drop proof
- Hand guard & stream line designed
- Deluxe carrying case
- Convenient battery door
- CAT.III 600V/CAT.II 1000V Safety standard

**Specifications:(All at 23°C ±5°C, ≤80% R.H.)**

### DC/AC Voltage

Range	Input Impedance	Accuracy
400V, 600V DC	≥1MΩ	±(0.7%+2dgt)
400V, 600V AC	1MΩ// < 100pF	±(1%+5dgt) 50Hz~500Hz

**Resolution:** 100mV

**Overload Protection:** 600V DC or AC rms

**Conversion Type:** Average sensing True-RMS indicating

### AC Current

Range	Accuracy	
	50Hz~60Hz	61Hz~400Hz
0A~60A	±(1.9%+7dgt)	±(2.5%+7dgt)
60.1A~400A	±(1.9%+5dgt)	
400.1A~600A	±(1.9%+5dgt)	

**Resolution:** 0.1A

**Overload Protection:** 600A rms

**Conversion Type:** Average sensing True-RMS indicating

### Resistance

Range	Accuracy
400.0Ω	±(1%+3dgt)

**Overload Protection:** 600V rms

**Resolution:** 0.1Ω

**Open Circuit Voltage:** 3V max

### Continuity

**Continuity Tester:** <30Ω approximate

**Indicator:** 2KHz tone buzzer

### Frequency


Range	Accuracy	Resolution
20Hz~400Hz	±(0.1%+2dgt)	1Hz

**Sensitivity:** 2A rms fpr ACA (A~)(>400Hz Unspecified)

3V rms to 110V rms for ACV(V~)

**Overload Protection:** AC/DC 600A

## General

<b>Sampling Rate:</b>	1.5 times/sec
<b>Overload Indication:</b>	OL is displayed
<b>Low Battery Indication:</b>	
<b>Auto Power Off:</b>	Approx. 30 minutes after last operation
<b>Operating Temperature:</b>	0°C~30°C(≤80% R.H.), 30°C~40°C(≤75% R.H.), 40°C~50°C(≤45% R.H.)
<b>Storage Temperature:</b>	-20°C~60°C
<b>Temperature Coefficient:</b>	0.2×(spec. Acc'y)/°C <18°C, >28°C
<b>Shock Proof:</b>	4 feet drops
<b>Safety:</b>	IEC 61010-1:2001: CAT.III 600V, CAT.II 1000V
<b>Maximum Conduct Size:</b>	34mm dia.
<b>Maximum Jaw Opening:</b>	37mm dia.
<b>Power Requirement:</b>	Single 9V battery (NEDA 1604 or IEC 6F22)
<b>Battery Life:</b>	200 hours(Alkaline)
<b>Size:</b>	76mm(W)×220mm(L)×50mm(H)
<b>Weight:</b>	360g with holster
<b>Accessories:</b>	Battery (installed), Test Leads, Carrying Case and User Manual