

Guide contrôleur Fibaro Swipe



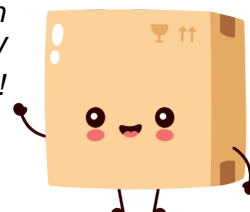
**Contrôleur gestuel SWIPE Fibaro
blanc - compatible Z-Wave -
Alimentation batterie ou micro-USB
5V**

Réf FGGC-001 WHIT

154.86€^{TTC*}

Voir le produit : <https://www.domomat.com/57599-controleur-gestuel-swipe-fibaro-blanc-compatible-z-wave-alimentation-batterie-ou-micro-usb-5v-fibaro-fggc-001-whit.html>

*Le produit Contrôleur gestuel SWIPE Fibaro blanc - compatible Z-Wave - Alimentation
batterie ou micro-USB 5V
est en vente chez Domomat !*



— SWIPE —



Operating manual

Scan the code to watch the video.



Watch the video tutorial before configuring the device.

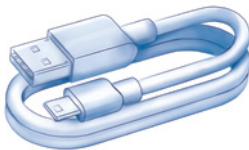
Support

If you need help configuring the FIBARO Swipe, take advantage of our guides and technical manuals available at: <http://manuals.fibaro.com>

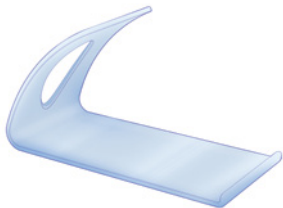
Package Contents



Manuals and Warranty



Micro-USB Cable



Holder



FIBARO Swipe

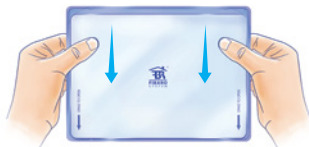
Step 1. Detach the frame

Detach the front magnetic frame using the gap in the bottom of the housing.



Step 2. Slide out the plate

Slide the detection plate down to remove it from the housing.



Step 3. Engage the batteries

Pull out the paper stripe protecting the batteries.



Step 4. Insert the plate

Insert the detection plate back in the housing by sliding it up. The device will confirm powering up with an acoustic signal.



Step 5. Replace the picture

You can replace the existing photo with your favorite one at this point.



Step 6. Attach the frame

Attach the front magnetic frame.



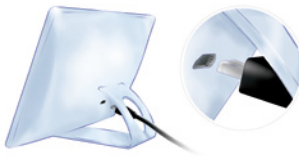
Step 7. Place on the holder

Place the assembled device on its holder.



Step 8. Plug the USB cable

Connect the power supply via the USB cable for the configuration process.



Adding the device

The device must be in the direct range of the Z-Wave controller during the adding process.



Step 1

Login to the Home Center controller and select "Devices" from the main menu.



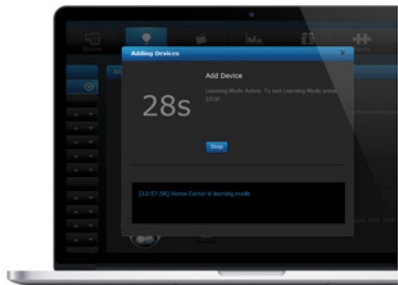
Step 2

Select the "Add or remove device" option from the left side menu.



Click „Add“ to start adding a new device (learning mode).

Follow the instructions on the next page.



Adding the device

Step 3

Move and hold your hand close to the center of the pad for around 4 seconds.

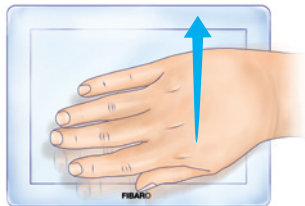
Step 4

A loud sound sequence will confirm entering the menu, keep holding your hand.



Step 5

After hearing two short beeps, take your hand away and swipe up to confirm selection.




Step 6

Wait for the device to be added to the system.

Gestures configuration

After the device is added, you can proceed with its configuration in the Home Center interface.


- 1 Click the icon  in the top right corner of the FIBARO Swipe window.
- 2 Select a gesture to which you want to assign reaction and click the plus icon (New Reaction).
- 3 Select the device you want to control.
- 4 From the available options select the reaction of the controlled device and complete the setup by clicking "Save".

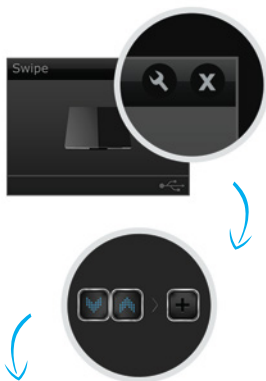
TIP: Configuration of sequences is described later in this manual.



Gesture sequences configuration

Sequence configuration is just as simple as gesture configuration.

- 1 Click the icon  in the top right corner of the FIBARO Swipe window in the Home Center interface.
- 2 Drag and drop two or three gestures to create a desired sequence. Confirm the selection by clicking "Confirm new sequence".
- 3 Wake up the Swipe according to the instructions on page 11 (section **Menu**).
- 4 Click the plus icon (New Reaction) next to the newly created sequence.
- 5 Select the device you want to control.
- 6 From the available options select the reaction of the controlled device and complete the setup by clicking "Save".



Gestures and sequences

FIBARO Swipe supports 6 gestures (up, down, left, right, clockwise, counter-clockwise) and combinations of gestures, called sequences. Sequences can be made of two or three gestures. Every sequence must be unique and cannot contain circular gestures. Additionally, two identical gestures may not be used next to each other. See examples below.



Left



Right



Circular



Up



Down



Sequence

Acoustic signals

FIBARO Swipe is equipped with a buzzer, which signals detected gestures, menu position and status of the device. Validity of every detected gesture or sequence is signalled by:

2 short beeps - gesture/sequence is valid

1 long beep - gesture/sequence is invalid

Intermittent tone - during a circular gesture.

Powering modes

FIBARO Swipe can operate on either USB power supply or batteries.



The device is always active.

The device immediately responds to gestures.



After a few seconds of inactivity, the device enters the Standby Mode to preserve battery life.

Exit the Standby Mode before performing a gesture. Place your hand close to the center of the pad until a high pitched beep sounds.

Menu

Menu allows to perform Z-Wave network actions. In order to enter and navigate the menu:

1. Move and hold your hand close to the center of the pad.
2. Loud sound sequence will confirm entering the menu, keep holding your hand.
3. Wait for the buzzer to indicate the desired menu position:
 - **1 short beep** - wake up the device
 - **2 short beeps** - learning mode (add/remove)
 - **3 short beeps** - reset the device
4. Take your hand away and swipe up to confirm selection.

TIP: In battery mode, before entering the menu, a high pitched beep will signal exiting the Standby Mode.

