



Paulmann

IP20



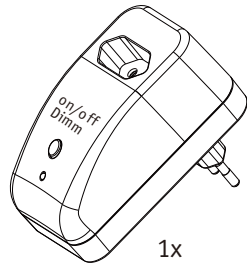
Info

www.paulmann.com

Paulmann Licht GmbH
Quezinger Feld 2
31832 Springe
Germany

www.paulmann.com

Art.-Nr.:
500.20



1x

Bluetooth EuroPlug Switch/Dimm

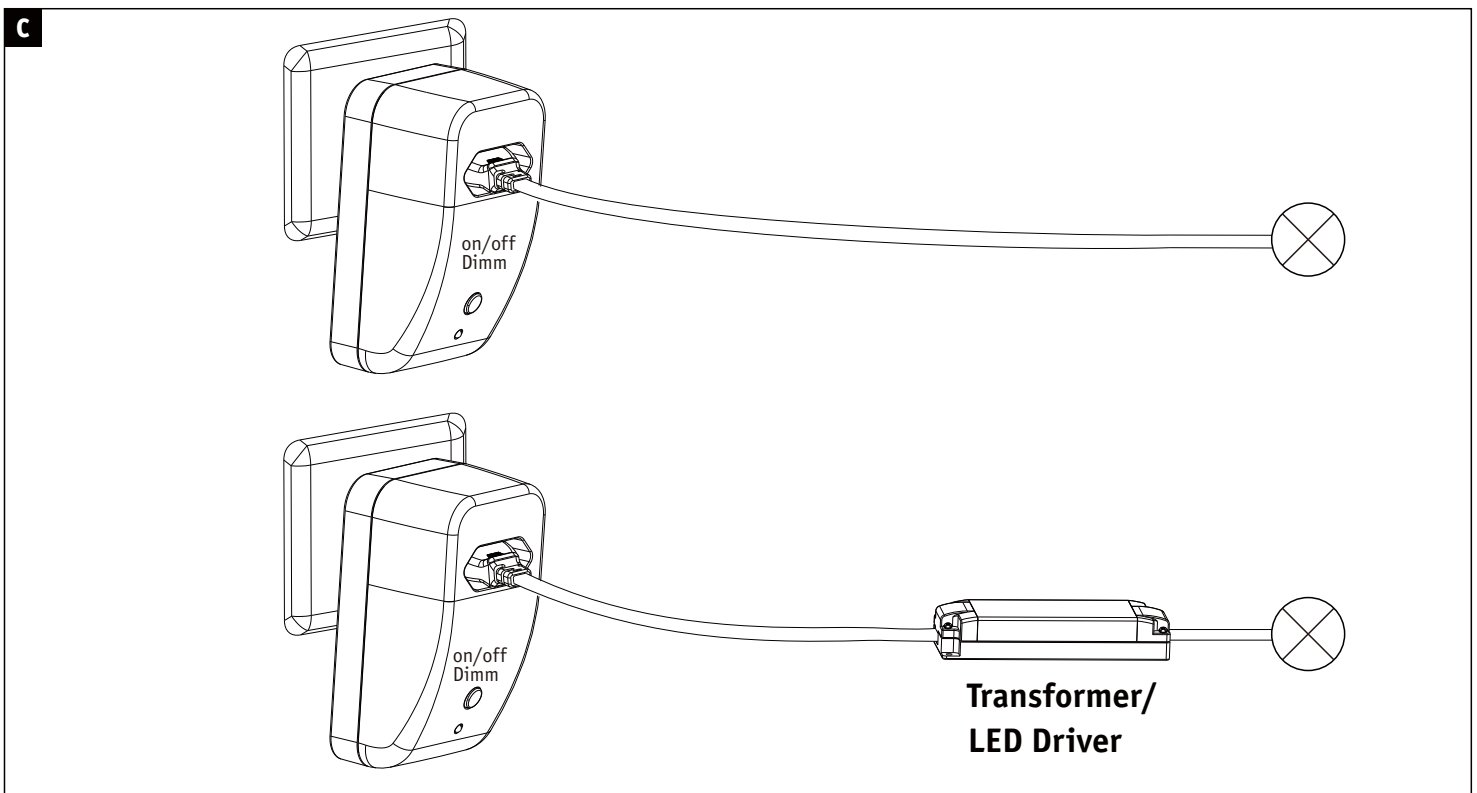
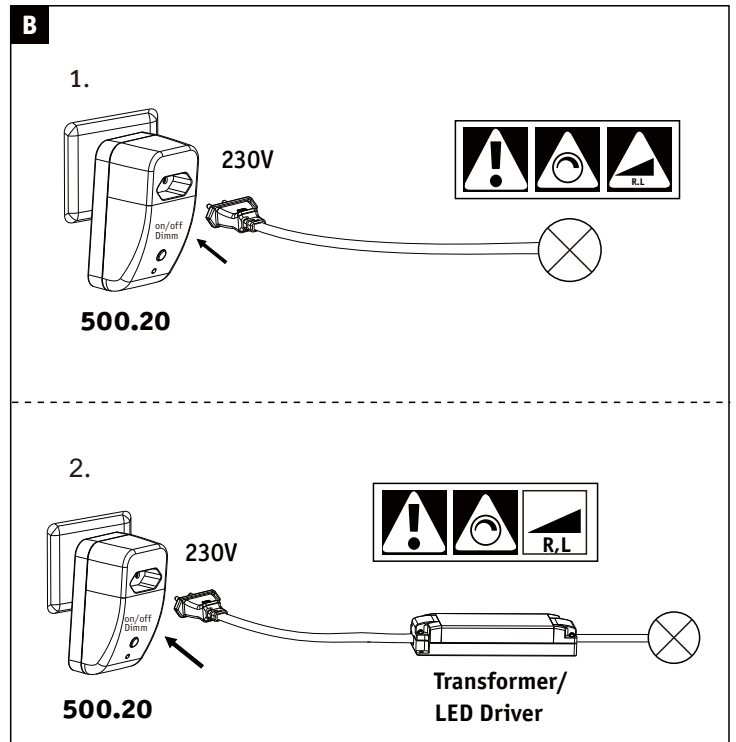
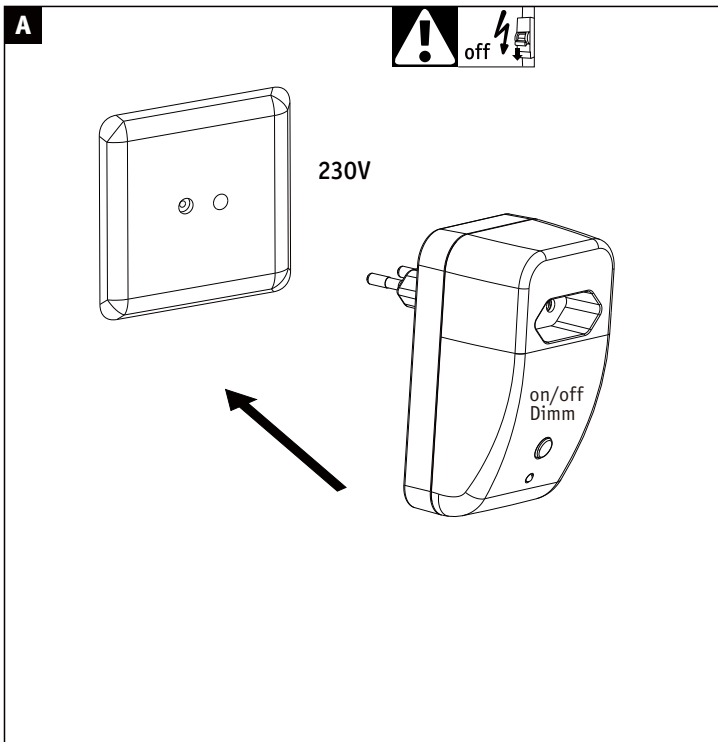
INPUT: 230V~50Hz max.2.5A

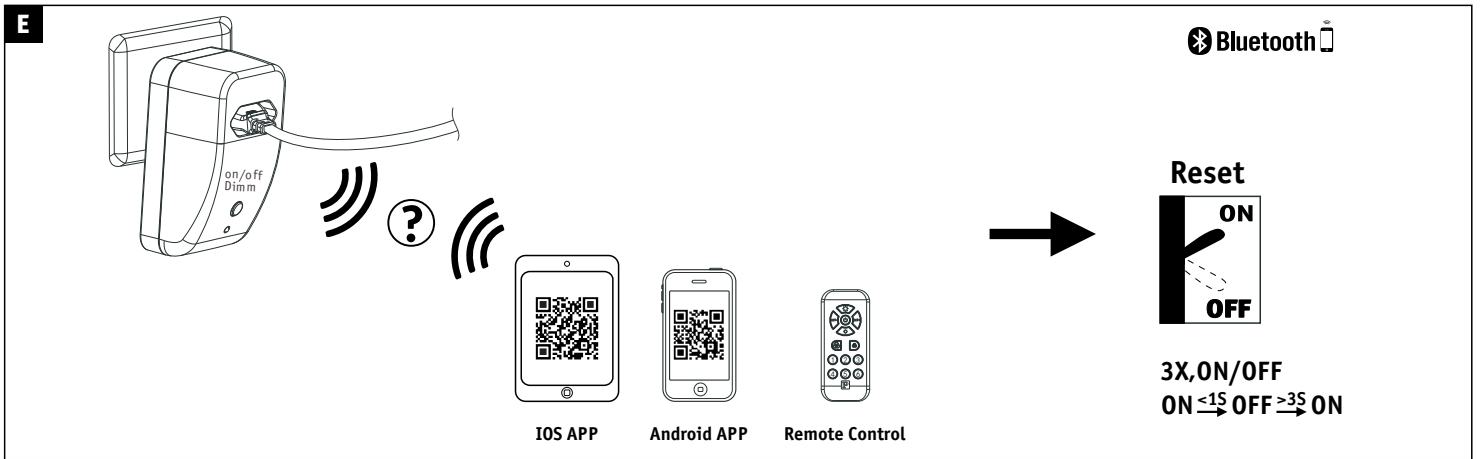
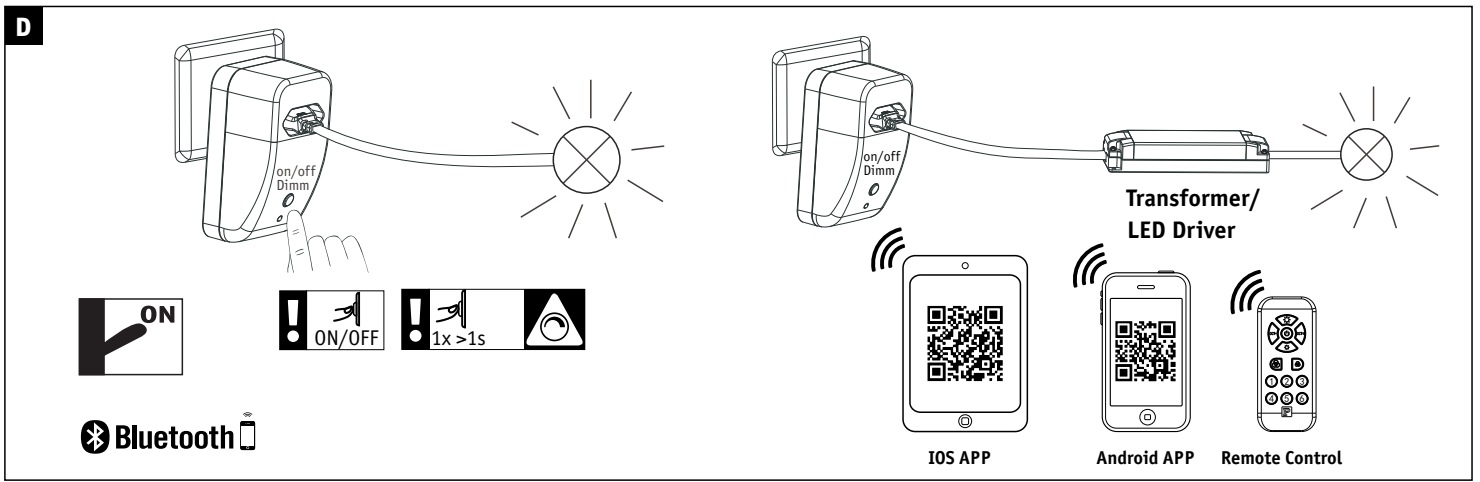
OUTPUT: 230V~50Hz

max.400W (Resistive Load)

max.75W (Capacitive Load)

(+MA 0326)PKE 08/17





F

Paulmann Home

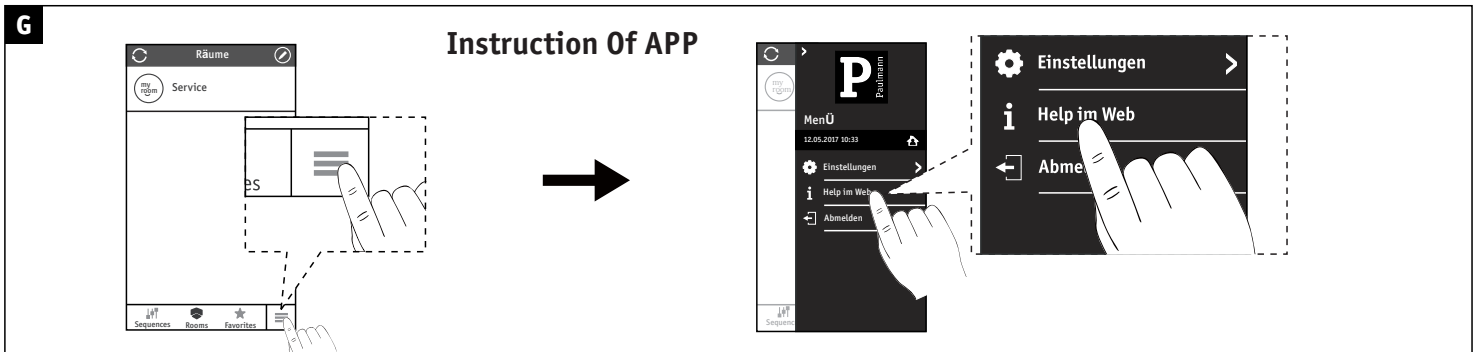
IOS APP

Android APP

Not incl. • iPad • iPhone 4S Higher • Android 4.4 Higher • Bluetooth 4.0 Higher

Not incl. Remote Control

Paulmann Art.-Nr.500.01



Hiermit erklärt Paulmann Licht, dass der Funkanlagentyp Art.-Nr: 500.20 Richtlinie 2014/53/EU entspricht. Der vollständige Text der EU-Konformitätserklärung ist unter der folgenden Internetadresse verfügbar: www.paulmann.de

Zugelassen für den Betrieb in allen Ländern der EU / Approved for operating in all European countries

CE: Konform mit / in accordance with / conformément a 2014/30/EU, 2014/53/EU <http://www.paulmann.com/de/de/b2b-haendler-log-in.html>

Funk-Frequenz 2,4 GHz - 2,4835 GHz. Abgestrahlte Energie 10mW



doesn't apply for the geographical area within a radius of 20km from the centre on "Ny Alesund"