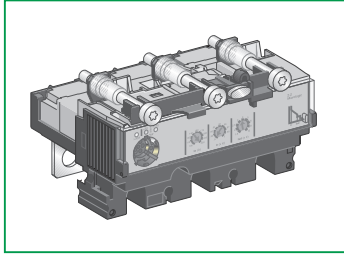


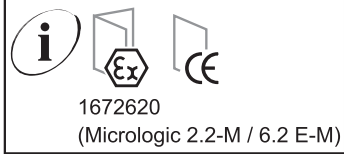
Compact NSX100-250

Micrologic trip unit
Déclencheur Micrologic
Bloque de relés Micrologic



GHD16045AA-09

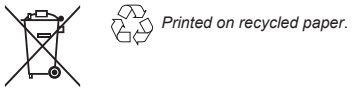
www.schneider-electric.com



Schneider Electric Industries SAS

35, rue Joseph Monier
CS 30323
F - 92506 Rueil Malmaison Cedex

www.schneider-electric.com



© 2017 Schneider Electric.
All rights reserved.

PLEASE NOTE

■ Electrical equipment should be installed, operated, serviced, and maintained only by qualified personnel.
■ No responsibility is assumed by Schneider Electric for any consequences arising out of the use of this material.

REMARQUE IMPORTANTE

■ L'installation, l'utilisation, la réparation et la maintenance des équipements électriques doivent être assurées par du personnel qualifié uniquement.
■ Schneider Electric décline toute responsabilité quant aux conséquences de l'utilisation de cet appareil.

TENGA EN CUENTA

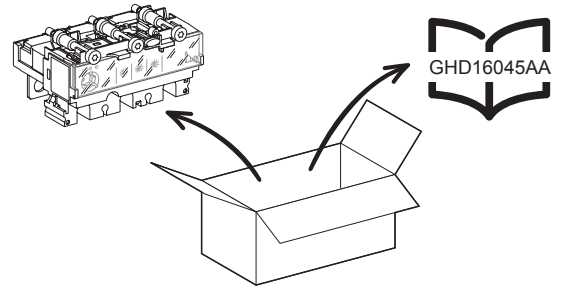
■ La instalación, manejo, puesta en servicio y mantenimiento de equipos eléctricos deberán ser realizados sólo por personal cualificado.
■ Schneider Electric no se hace responsable de ninguna de las consecuencias del uso de este material.

请注意

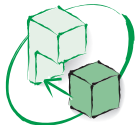
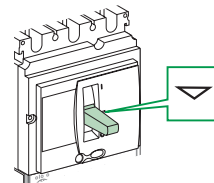
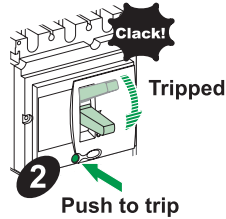
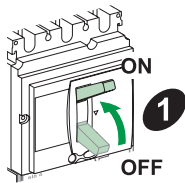
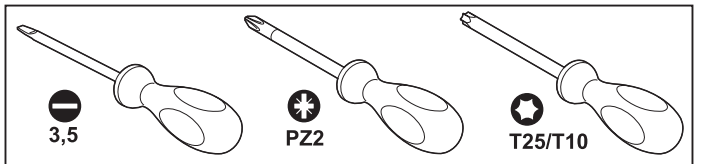
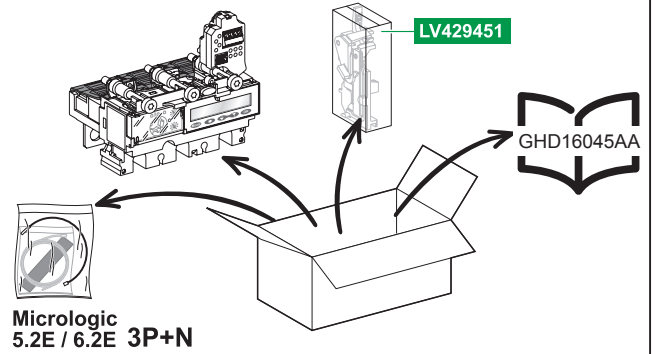
■ 电气设备的安装、操作、维修和维护工作仅限于合格人员执行。
■ Schneider Electric 不承担由于使用本资料所引起的任何后果。



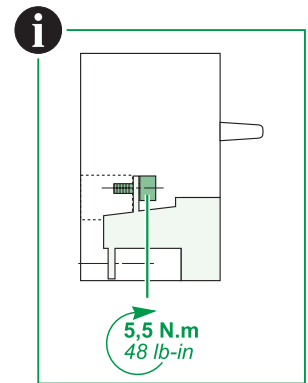
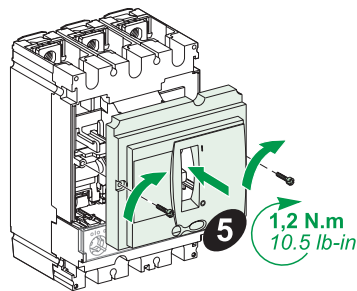
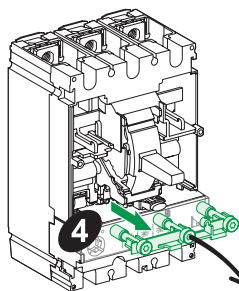
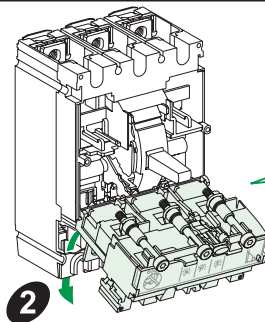
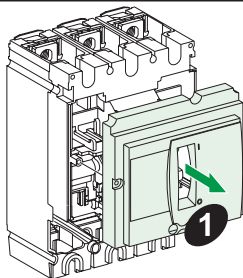
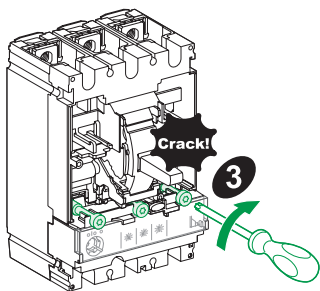
Micrologic 2.2



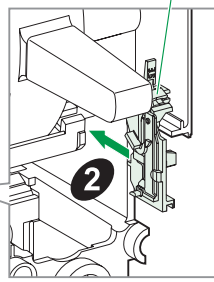
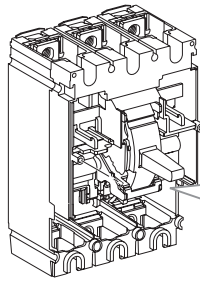
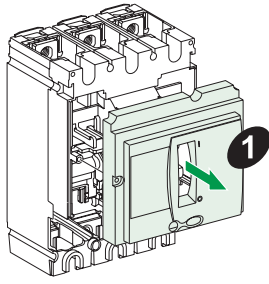
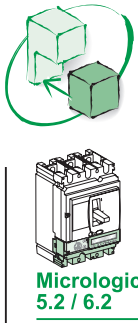
Micrologic 5.2 / 6.2



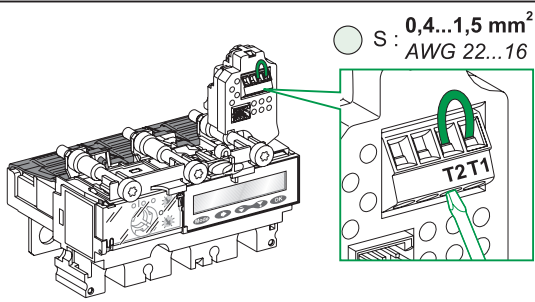
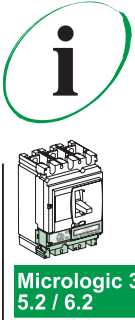
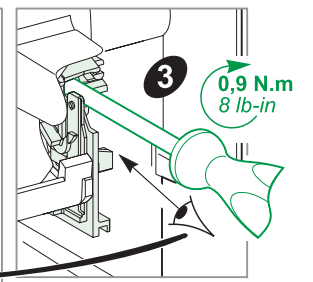
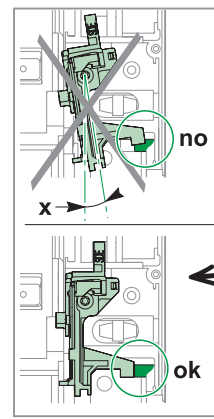
Micrologic 2.2



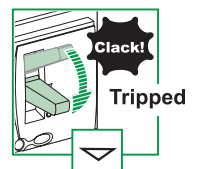
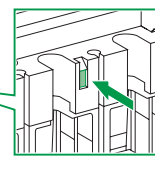
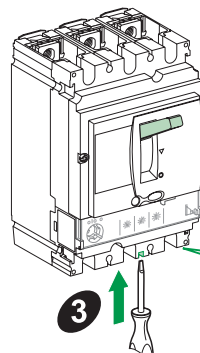
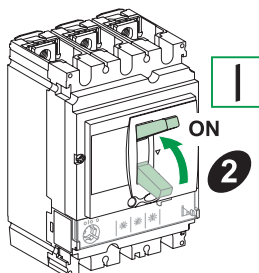
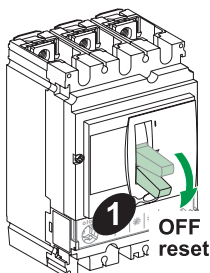
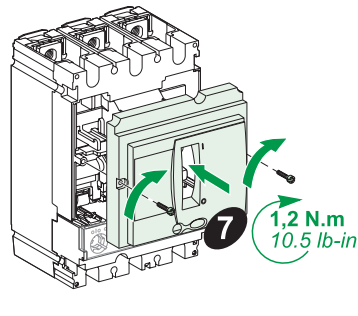
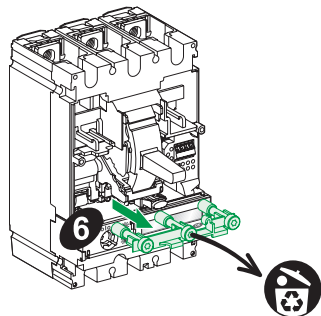
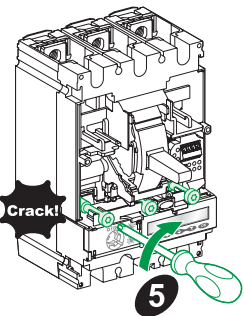
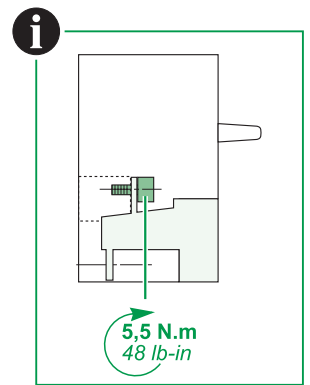
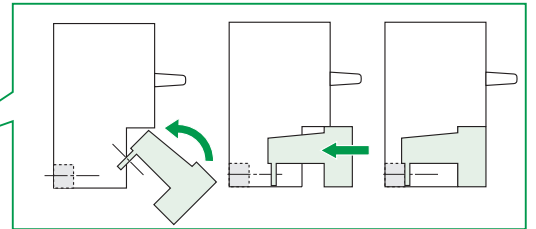
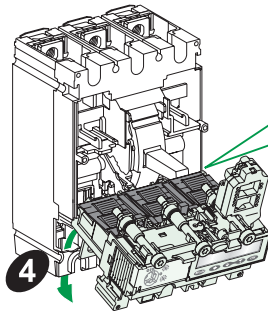
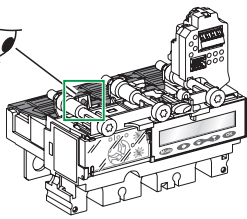
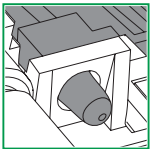
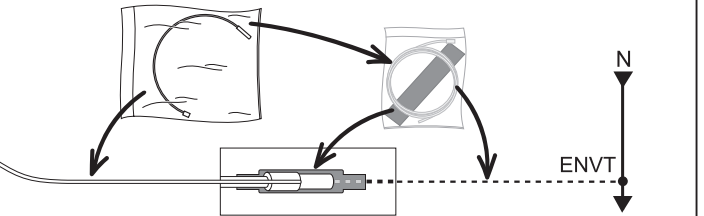
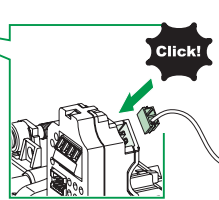
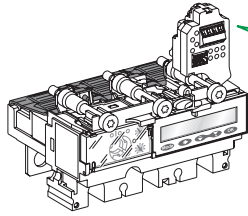
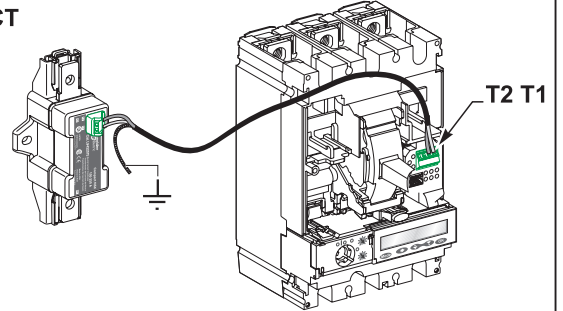
GHD16045AA-09



LV429451

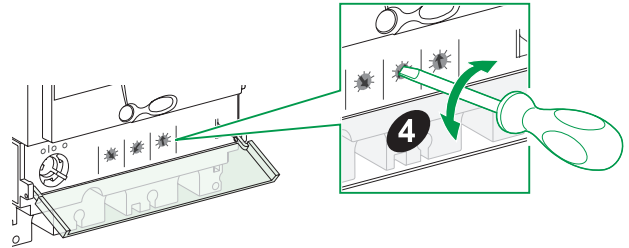
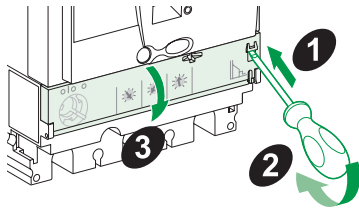


with ENCT

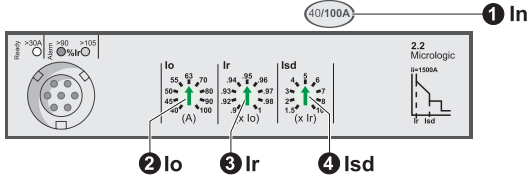




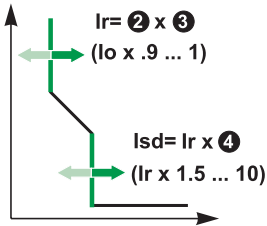
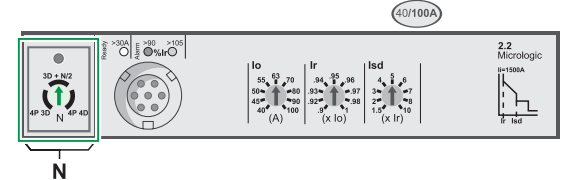
Ir, I_{sd}



3P-4P

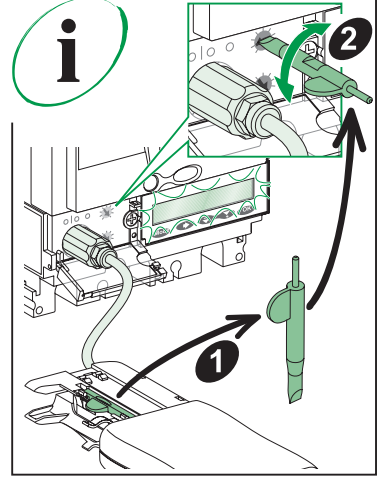
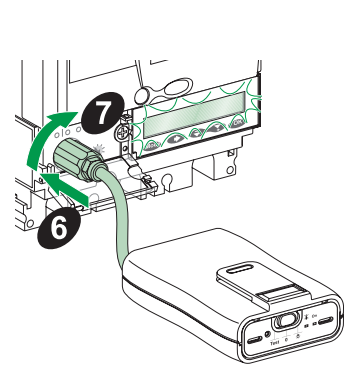
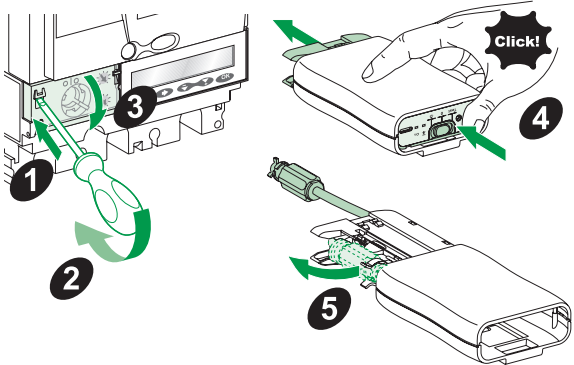


4P



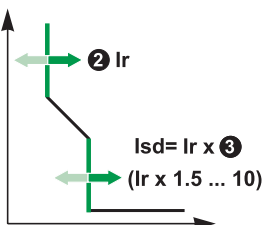
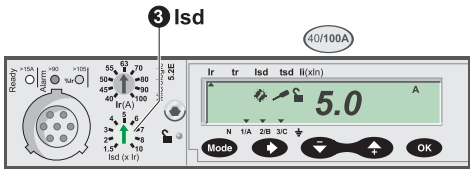
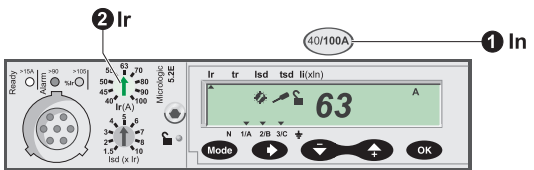
1 In	100 A
2 lo	40 45 50 55 63 70 80 90 100 (A)
3 lr	.9 .92 .93 .94 .95 .96 .97 .98 1 (x lo)
$I_r = 63 \times 0.95 = 59.9 \text{ A}$	
4 lsd	1.5 2 3 4 5 6 7 8 10 (x lr)
$I_{sd} = 59.9 \times 5 = 299 \text{ A}$	

N	
4P 3D	OFF
3D + N/2	→ I _r /2
4P 4D	→ I _r



Ir, I_{sd}

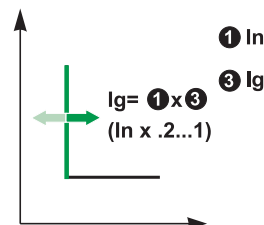
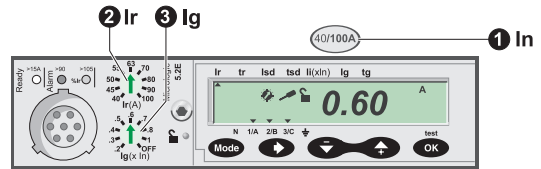
Micrologic 5.2



1 In	100 A
2 lr	40 45 50 55 63 70 80 90 100 (A)
$I_r = 63$	
3 lsd	1.5 2 3 4 5 6 7 8 10 (x lr)
$I_{sd} = 63 \times 5 = 315 \text{ A}$	

Ir, I_g

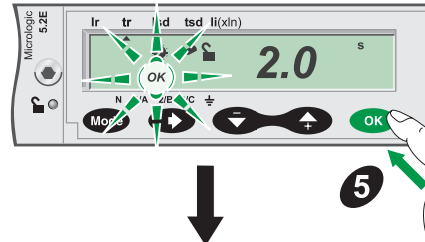
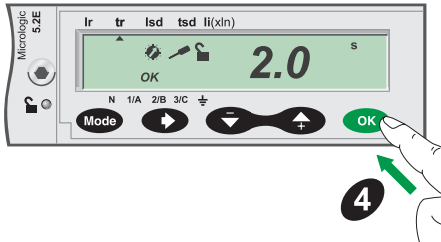
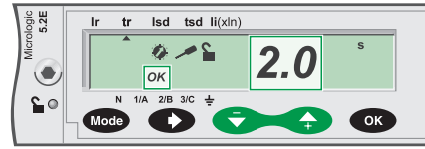
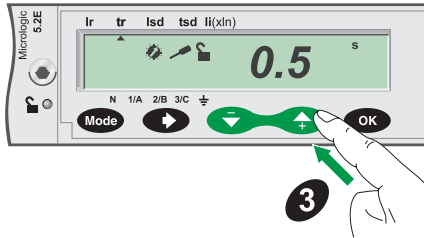
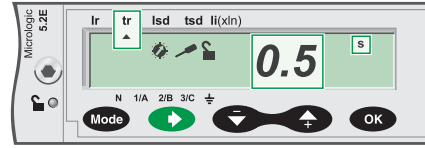
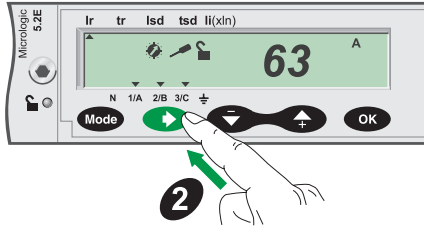
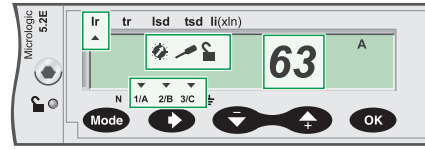
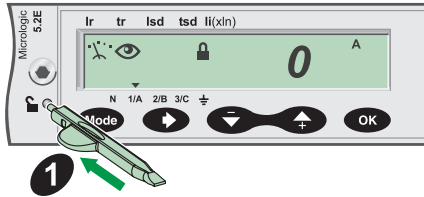
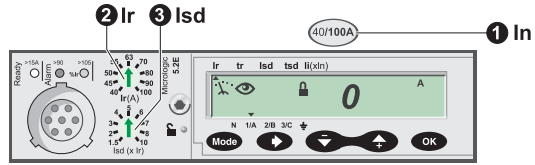
Micrologic 6.2



1 In	100 A
3 lg	2 .3 .4 .5 .6 .7 .8 1 OFF (x In)
$I_g = 100 \times .6 = 60 \text{ A}$	



5.2 Ir, tr, lsd, tsd, li
 6.2 Ir, tr, lsd, tsd li, lg, tg
 tr @ 6 Ir



i **DOCA0141EN**
DOCA0141FR
DOCA0141ES
DOCA0141ZH
 Micrologic User Guide

